

**Property Type:**

Former Self Service  
Carwash

**Sale Price:**

\$526,675.00

**Land Size:**

Approx. (+-) 0.60  
acres  
26,136 s.f.

**Building Size:**

Approx. 2,850 s.f.  
9 Automotive Bays  
4 Vacuum Stations

**Area Features:**

Mauldin Parks &  
Recreation  
Springfield Park  
CVS  
Domino's  
QT  
Publix  
Wells Fargo

**Parking:**

On Site

**Traffic Count:**

20,500 VPD

**Taxes:**

\$3,470.53

**Zoning:**

City of Mauldin  
C-2

**Tax Map:**

M003020100705



**Available For Sale**  
**207 E. Butler Rd., Mauldin, SC 29662**



M.S. Shore Company, Inc.  
904 N. Church St.  
Greenville, SC 29601

Phone (864) 235-3898  
Fax (864) 235-0448  
msshore@msshore.com

No warranty or representation, expressed or implied is made as to the accuracy of the information contained herein and same is submitted subject to errors, omissions, change of price, rental or other conditions, withdrawal without notice and to any special listing conditions imposed by our principals.



## Available For Sale 207 E. Butler Rd., Mauldin, SC 29662

### AREA FEATURE MAP



M.S. Shore Company, Inc.  
904 N. Church St.  
Greenville, SC 29601

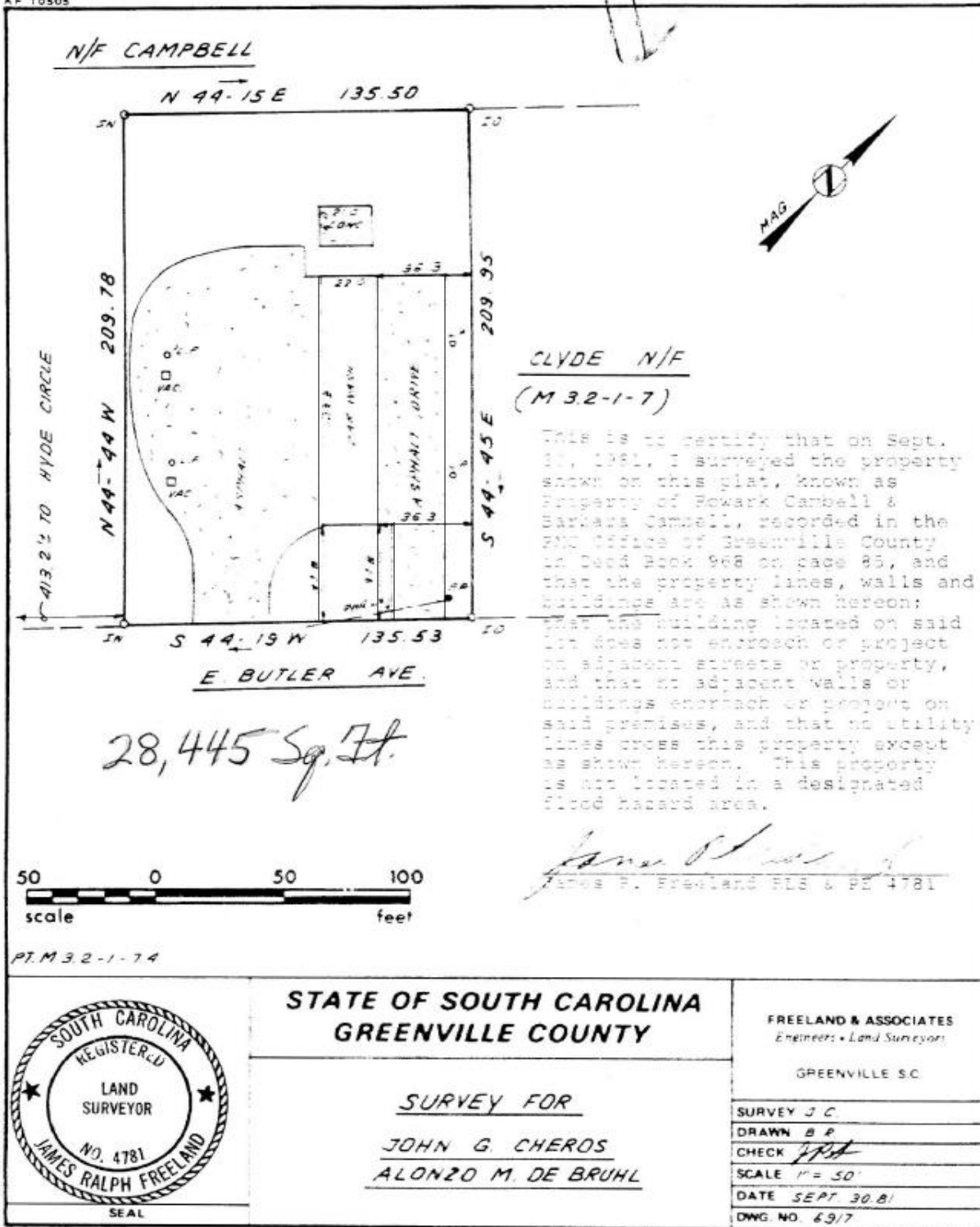
Phone (864) 235-3898  
Fax (864) 235-0448  
[msshore@msshore.com](mailto:msshore@msshore.com)

No warranty or representation, expressed or implied is made as to the accuracy of the information contained herein and same is submitted subject to errors, omissions, change of price, rental or other conditions, withdrawal without notice and to any special listing conditions imposed by our principals.

# MSHORE

M.S. SHORE COMPANY, INC.

AF 10505



M.S. Shore Company, Inc.  
904 N. Church St.  
Greenville, SC 29601

Phone (864) 235-3898  
Fax (864) 235-0448  
msshore@msshore.com

No warranty or representation, expressed or implied is made as to the accuracy of the information contained herein and same is submitted subject to errors, omissions, change of price, rental or other conditions, withdrawal without notice and to any special listing conditions imposed by our principals.