

Property Type:

Residential land in a beautiful mountain hollow at the head waters to the Reedy River.

Price: \$300,000.00

Land Size: Approx.
+- 12 Acres

Area Features:

Ingles Grocery Store
Downtown -
Travelers Rest
Swamp Rabbit Trail

Access:

131.8 ft. frontage on
Elizabeth Lane
69.2 ft. frontage on
Hunt St.

Parking:

On-Site

Zoning:

R-S

Utilities:

Power
Water
Gas?
Sewer?

Taxes:

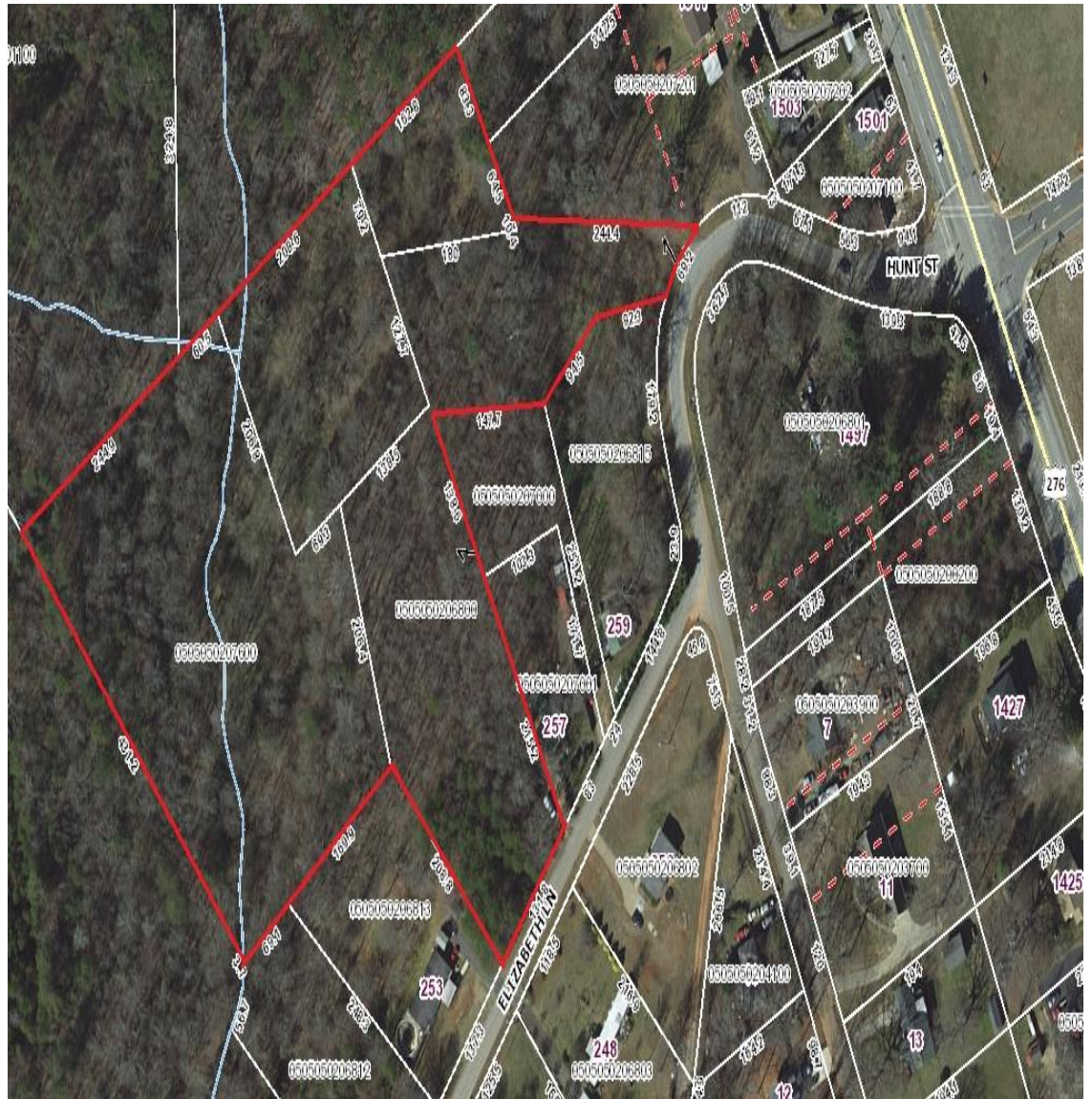
\$754.90

Tax Map No.'s:

0505050206800
0505050207500
0505050207600
0505050207400

**Available For Sale**

(+-) 12 Acres in Travelers Rest, SC 29690



M.S. Shore Company, Inc.
904 N. Church St.
Greenville, SC 29601

Phone (864) 235-3898

Fax (864) 235-0448

msshore@msshore.com

No warranty or representation, expressed or implied is made as to the accuracy of the information contained herein and same is submitted subject to errors, omissions, change of price, rental or other conditions, withdrawal without notice and to any special listing conditions imposed by our principals.

SHORE

M.S. SHORE COMPANY, INC.



M.S. Shore Company, Inc.
904 N. Church St.
Greenville, SC 29601

Phone (864) 235-3898
Fax (864) 235-0448
msshore@msshore.com

No warranty or representation, expressed or implied is made as to the accuracy of the information contained herein and same is submitted subject to errors, omissions, change of price, rental or other conditions, withdrawal without notice and to any special listing conditions imposed by our principals.