



Property Type:
Unimproved Land
Excellent Development
Potential

Sale Price:
\$25,000.00 per acre

Land Size:
+- 81.4 acres

Access:
Exit 2 off I-385
Hwy 308 Clinton, then
south on Frontage Rd.
and Little Acres Rd.

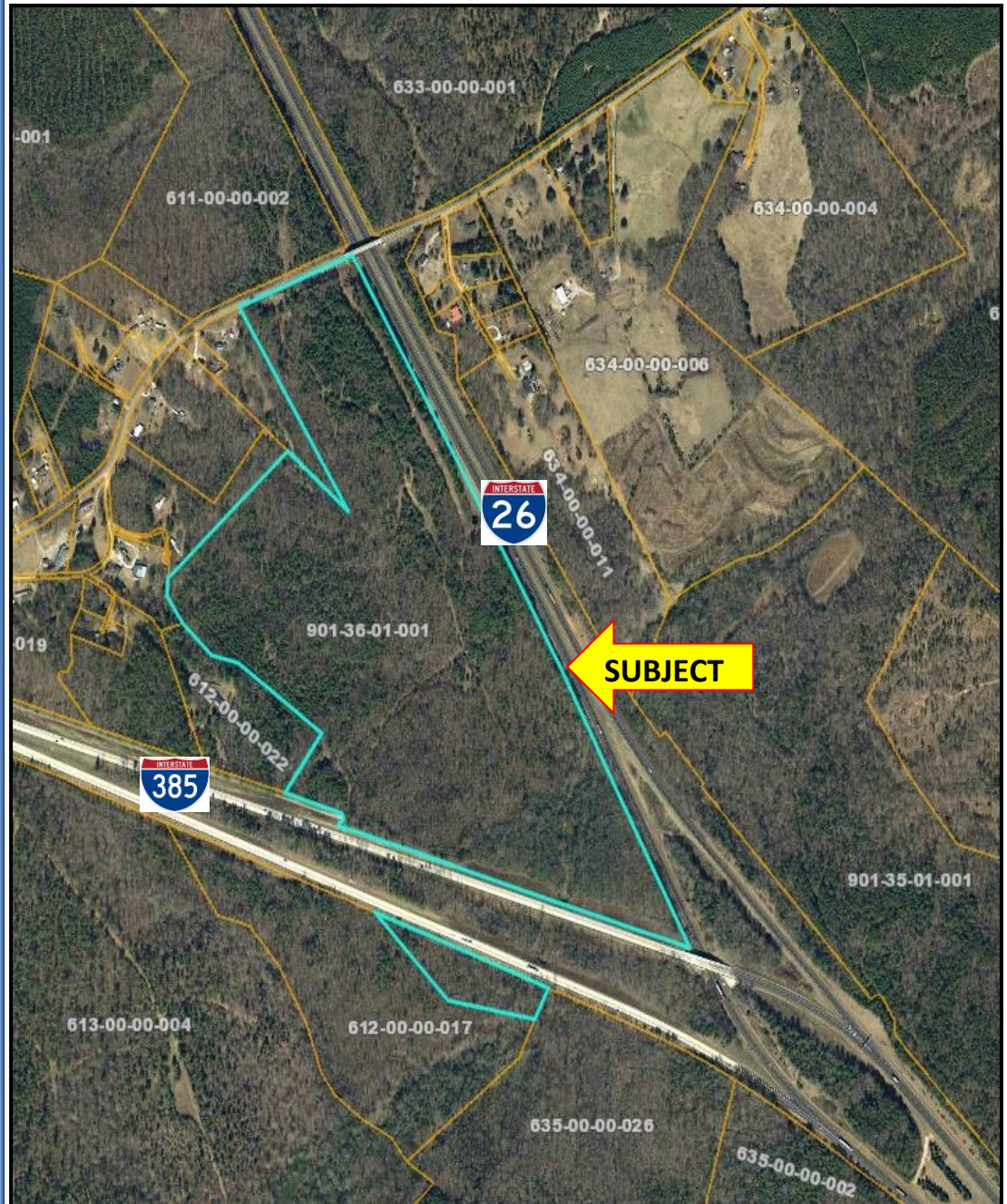
1677' Frontage on I-
385 & 2606' Frontage
on I-26

Zoning:
I-1 Industrial
City of Clinton, SC

Utility Providers:
Laurens County
Electric Cooperative
City of Clinton DPW

Tax Map #:
Laurens County, SC
901-36-01-001

Available For Sale/Lease/Build to Suit Beard Fork Site Clinton, SC



M.S. Shore Company, Inc.
904 N. Church St.
Greenville, SC 29601

Phone (864) 235-3898
Fax (864) 235-0448
msshore@msshore.com

No warranty or representation, expressed or implied is made as to the accuracy of the information contained herein and same is submitted subject to errors, omissions, change of price, rental or other conditions, withdrawal without notice and to any special listing conditions imposed by our principals.

Locator Map



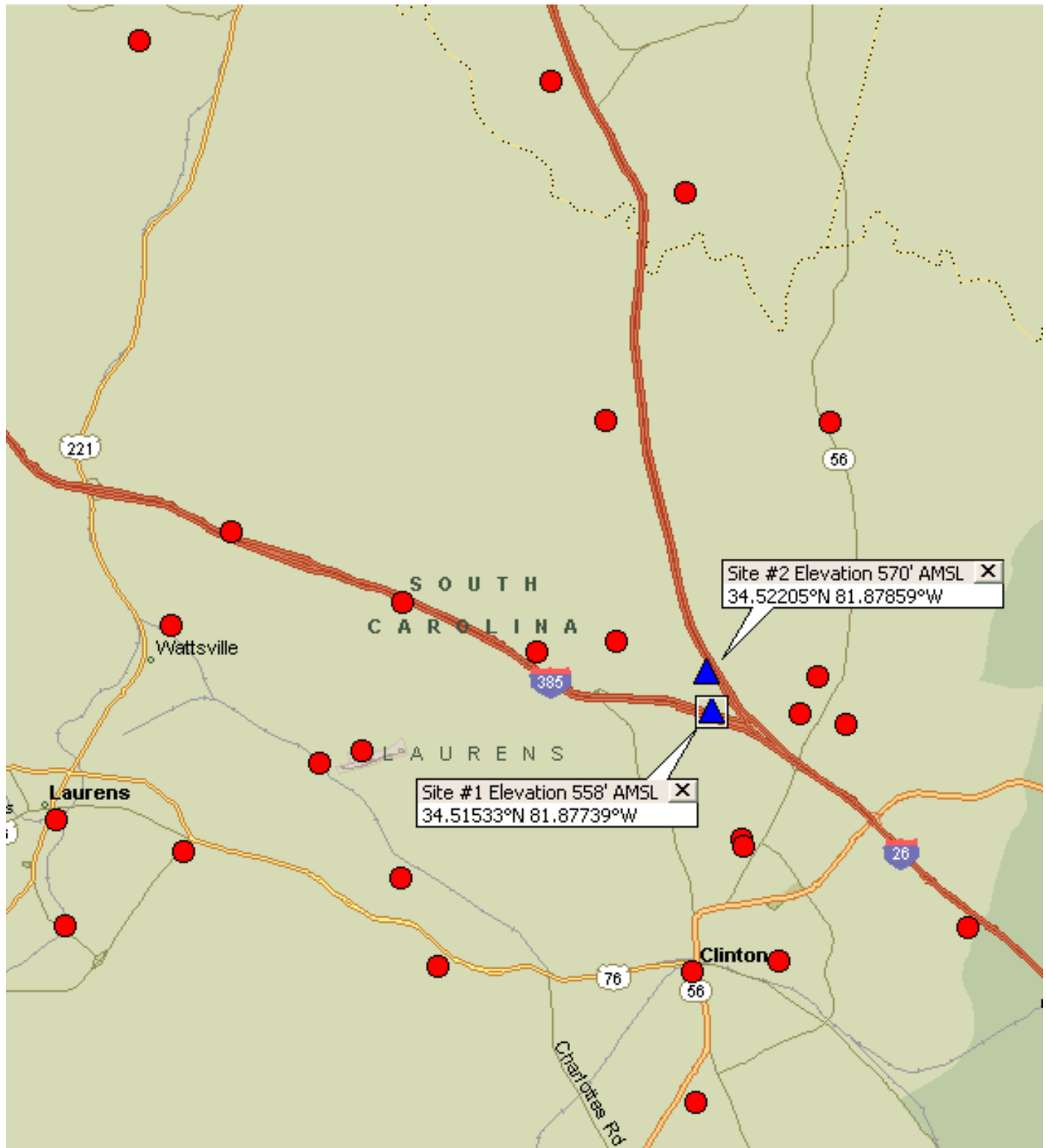
M.S. Shore Company, Inc.
904 N. Church St.
Greenville, SC 29601

Phone (864) 235-3898
Fax (864) 235-0448
msshore@msshore.com

No warranty or representation, expressed or implied is made as to the accuracy of the information contained herein and same is submitted subject to errors, omissions, change of price, rental or other conditions, withdrawal without notice and to any special listing conditions imposed by our principals.

SHORE

M.S. SHORE COMPANY, INC.

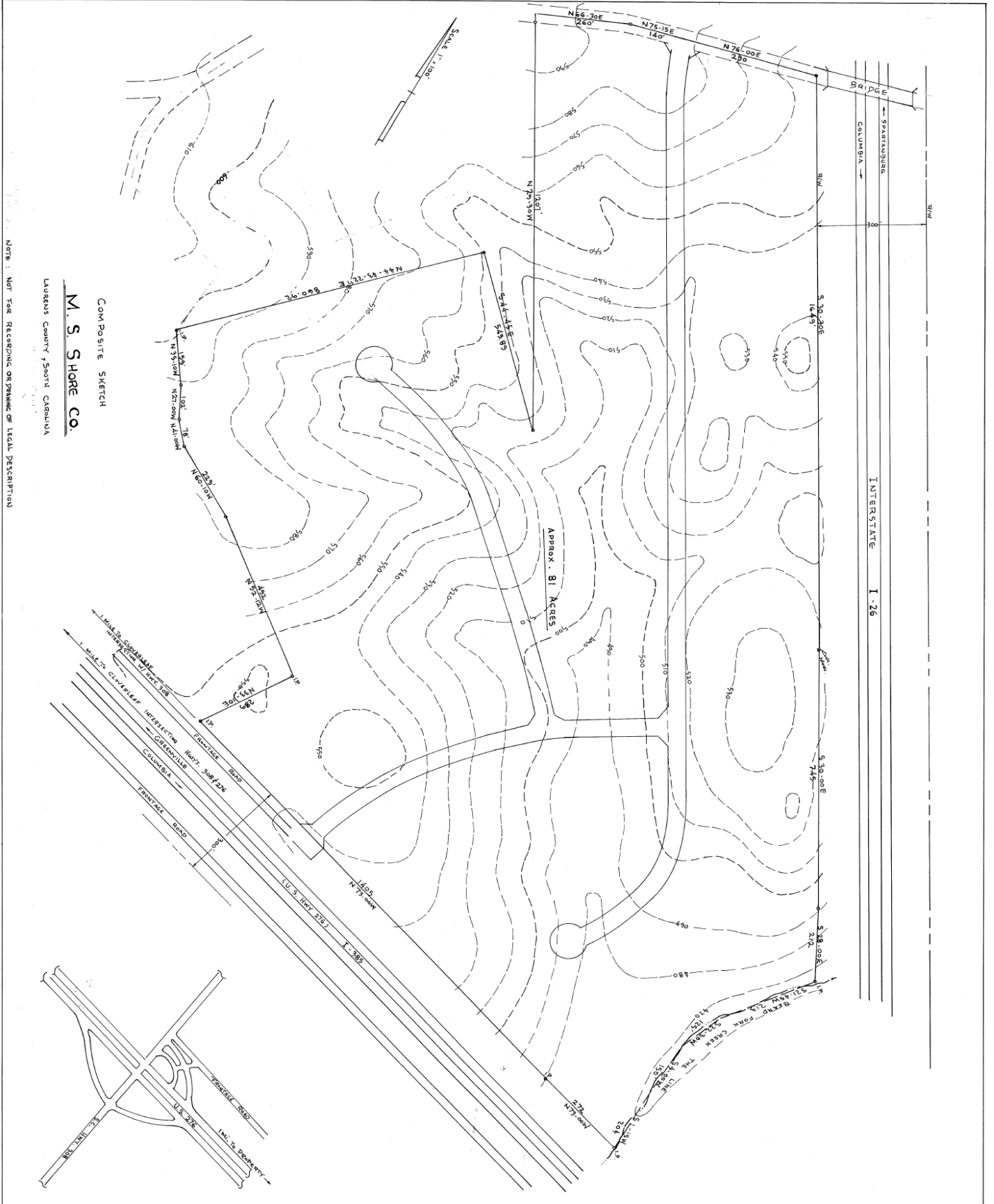


M.S. Shore Company, Inc.
904 N. Church St.
Greenville, SC 29601

Phone (864) 235-3898
Fax (864) 235-0448
msshore@msshore.com

No warranty or representation, expressed or implied is made as to the accuracy of the information contained herein and same is submitted subject to errors, omissions, change of price, rental or other conditions, withdrawal without notice and to any special listing conditions imposed by our principals.

Proposed Site Plan & Topo



COMPOSITE SKETCH

M. S. SHORE CO.

LAURENS COUNTY - SOUTH CAROLINA

NOTE: NOT TO BE RECORDED OR PRINTED OR LEGAL DESCRIPTION

